

WWW.KHALEEJALFAW.COM

GENERAL CONTRACTING, TRANSPORTATION, PETROLEUM
AND MARINE SERVICES LTD.

KHALEEJ ALFAW COMPANY



KHALEEJ ALFAW COMPANY
GENERAL CONTRACTING, TRANSPORTATION, PETROLEUM AND MARINE SERVICES LTD.
Mobile: +9647822266149
Address: Basra Al Jazaer Street, Alqumaa Group Building, Second Floor, Office No.03
P.O.Box: 2189
Email: info@khaleejalfaw.com



www.alshamspress.com



www.otomated.com



KHALEEJ ALFAW

COMPANY

Yes We Can

GENERAL CONTRACTING, TRANSPORTATION, PETROLEUM
AND MARINE SERVICES LTD.

WWW.KHALEEJALFAW.COM

Introduction



Our company is a general contracting , oil and gas services, established for the specific purpose of undertaking operations in Iraq and the globe, Our company is derived from group of engineers highly qualified & experienced in the oil field for many years. Our Oil Service Company aim is to supply the Iraqi oil sector with the necessary skills and technologies to dramatically boost hydrocarbon production volumes through contract drilling operations, services contracts, and/ or concessions. As a general contracting company, our well knowns services were provided to a range of big companies and organizations who are totally satisfied with our civil, electric and mechanical works. Our company cover all your needs and work to take you forward.



KHALEEJ ALFAW COMPANY
GENERAL CONTRACTING, TRANSPORTATION, PETROLEUM AND MARINE SERVICES LTD.
Mobile: +9647822266149
Address: Basra Al Jazaer Street, Alqumaa Group Building, Second Floor, Office No.03
P.O.Box: 2189
Email: info@khaleejalfaw.com

Who are we

We are a company established in IRAQ to provide a range of civil, electric, mechanical and Oil services to our valued clients. Our fundamental intention to improve production in oil & gas industry through sound well engineering and cost effective drilling, well stimulation and well intervention operations. Our company strategy is to exceed our client's expectations, in respect to quality, timing and pricing.



Mission & Vision

Mission

To be a leading construction company in the global market and become the customers' most preferred choice by attaining excellence in quality and timely completed value added projects.

To continually innovate, develop and adopt state-of-the-art technology in methods and materials to enhance productivity and cost effectiveness.

To continually improve the competence of our people.

To build a safety culture aimed at continually reducing the frequency, severity rate towards achieving zero accidents.

VISION

To be the Industry Leader and a Market Driven Engineering Construction Company renowned for excellence, quality, performance and reliability in all types of construction



KHALEEJ ALFAW COMPANY
GENERAL CONTRACTING, TRANSPORTATION, PETROLEUM AND MARINE SERVICES LTD.
Mobile: +9647822266149
Address: Basra Al Jazaer Street, Alqumaa Group Building, Second Floor, Office No.03
P.O.Box: 2189
Email: info@khaleejalfaw.com

Our values

We have more than 100 employees at 3 different locations in IRAQ, representing different cultures, We are the staff of GREENSTAR company guided by the following values:

Customer Satisfaction:

Customer Satisfaction is the key to our company success and keep our customer satisfaction in its higher levels is what we and our company believe in.

Teams Spirit:

Our company provide the great environment to a wonderful team spirit. A spirit that provide all necessary scales of services to our valued clients.

Integrity:

Our company have a very professional way to prevent mistakes and errors and provide all means to keep working process in the most clear and easy way.



Services

OUR SERVICES

SOIL BACKFILLING.
FENCE INSTALLATION.
BUILDINGS.
CARAVAN FABRICATIONS AND INSTALLATION.
WATER SYSTEM PROVISION AND INSTALLATION.
SEWER SYSTEM PROVISION AND INSTALLATION.
IRRIGATION SYSTEM PROVISION AND INSTALLATION.
PAVEMENT FOR ROADS AND WALKWAYS.
PILES FOUNDATION PROVISION AND INSTALLATIONS.
DIFFERENT KINDS OF CONCRETE WORKS.
WAREHOUSE CONSTRUCTIONS.

OIL SERVICES

SUPPLY UPSTREAM CHEMICAL
SUPPLY DOWNSTREAM CHEMICAL
SUPPLY ALL KINDS OF VEHICALS

GENERAL MANAGER

HR SERVICES
ADMIN SERVICES
FINANCE SERVICES
PROCUREMENT SERVICES
CATERING SERVICES
LOGISTICS SERVICE



KHALEEJ ALFAW COMPANY
GENERAL CONTRACTING, TRANSPORTATION, PETROLEUM AND MARINE SERVICES LTD.
Mobile: +9647822266149
Address: Basra Al Jazaer Street, Alqumaa Group Building, Second Floor, Office No.03
P.O.Box: 2189
Email: info@khaleejalfaw.com

A construction worker wearing a yellow hard hat is seen from the side, operating a large piece of machinery. The background shows a complex structure of steel beams and cables, suggesting a large-scale construction project. The scene is set outdoors under a clear sky.

CIVIL CONSTRUCTION

Our company is pioneer of many innovative modern style construction, engineering and project management techniques.

Since our inception, we have continually aimed at promoting the highest standards of excellence and have always been among the first to apply innovation in modern constructing.

The company is mainly focused on development and quality of work, while keeping in mind cooperation and understanding of our clients' needs.

As we aim at promoting the highest standards in the performance of our work. We value working closely with clients, contractors and local community to achieve mutual benefit.

With an intimate knowledge and extensive experience in building projects, we worked on environmentally sustainable developments and committed to maximizing value to our clients.

Cementing

CEMENTING AND CONCREAT SERVICES

Concrete is produced in four basic forms, each with unique applications and properties. Ready-mixed concrete, far the most common form, accounts for nearly three-fourths of all concrete. It's batched at local plants for delivery in the familiar trucks with revolving drums. Precast concrete products are cast in a factory setting. These products benefit from tight quality control achievable at a production plant. Precast products range from concrete bricks and paving stones to bridge girders, structural components, and wall panels. Concrete masonry another type of manufactured concrete, may be best known for its conventional 8-by-8-by-16inch block. Today's our units can be molded into a wealth of shapes, configurations, colors, and textures to serve an infinite spectrum of building applications and architectural needs. Cement-based materials represent products that defy the label of "concrete," yet share many of its qualities. Conventional materials in this category include mortar, grout, and terrazzo. soil-cement and roller-compacted concrete —"cousins" of concrete—are used for pavements and dams. Other products in this category include flowable fill and cement-treated bases. A new generation of advanced products incorporates fibers and special aggregate to create roofing tiles, shake shingles, lap siding, and countertops.



KHALEEJ ALFAW COMPANY
GENERAL CONTRACTING, TRANSPORTATION, PETROLEUM AND MARINE SERVICES LTD.
Mobile: +9647822266149
Address: Basra Al Jazaer Street, Alqumaa Group Building, Second Floor, Office No.03
P.O.Box: 2189
Email: info@khaleejalfaw.com

Electrical works

ELECTRICAL SERVICES Contract and support services provide the maintenance, parts, and service needed to get the best performance from equipment already in place. Our field technicians and customer support engineers can start up and commission equipment, perform planned maintenance, monitor performance and diagnose problems remotely, and respond to emergencies on a 24x7 basis, 365 days a year. With optimal maintenance and support, your business will have more reliable, higher quality, more cost-effective power. Our support services help businesses make the most of their existing electrical equipment by optimizing performance and extending the life of existing facilities. We maintain an experienced team of engineers, field technicians, and customer support engineers to serve customer needs. Our customer support centers are available 24x7, 365 days a year, to schedule services, monitor equipment, and provide emergency support. Our spare parts warehouses provide 24x7 access to manufacturing parts inventories, 365 days a year. Contract and support services provide the maintenance, parts, and service needed to get the best performance from your existing power system. Our company Electrical Services & Systems team is available 24 hours a day, 7 days a week, providing an unrivaled array of services that brings consistency, stability, and insight to every service contingency.

Equipment Start-Up, Commissioning Maintenance and Support, Services Operational and Maintenance Training Remote Monitoring Services Enterprise Monitoring Projects (Foreseer) Field Service and After market Services Emergency Services PowerChain Management Solution Services

Mechanical works



We have access to a fully equipped engineering workshop with highly skilled personnel to meet all your engineering needs. We are able to remove and or install any type of pump. We also have the ability to refurbish defective pumps of any type. Fully trained and qualified staff can attend to repairs and maintenance of diesel driven equipment such as lighting plants and earthmoving equipment. Our staff is well experienced in the maintenance of conveyors and affiliated plants and machinery and is fully experienced in the maintenance of roller mills. We specialize in corrosion protection. Mechanical maintenance on all dams in the oil sector.



KHALEEJ ALFAW COMPANY
GENERAL CONTRACTING, TRANSPORTATION, PETROLEUM AND MARINE SERVICES LTD.
Mobile: +9647822266149
Address: Basra Al Jazaer Street, Alqumaa Group Building, Second Floor, Office No.03
P.O.Box: 2189
Email: info@khaleejalfaw.com



Over the years in our search for new sources and outlets, we have developed a comprehensive network providing us with wide ranging human resources. Our company has developed into a gathering point for international human resources. We try to match our Employers with the right Employee in all respects. Our established and long-standing affiliation with international recruitment offices offers us almost unlimited resources in volume, variety and quality which gives us a degree of flexibility.

We have a wide-ranging clientele with varied needs, thus, we offer a flexible service depending on our client's specific requirements. Our procedures with each new client are: first, to identify as to what degree our services is required second, to establish a full range of criteria our prospective

employee must meet successfully Third, to offer our client the best possible options to choose from fourth, after selection of the successful candidate, we deliver our client's new employee with all possible haste and minimal effort on the client's part We are capable of dealing with the full process of gainful employment from start to finish as needed by each client. This includes: All immigration and migration considerations from both the source country and the destination country, Documentation for relevant authorities, All travel arrangements and requirements

General services



Oil and Gas services

The global oil and gas transportation industry has experienced a number of significant pipeline ruptures and leaks in recent history. While the numbers for both leaks and ruptures are down historically in both events per mile and volume transported, any number of events that impact human health, safety or the Environment (HSE) is still too high. With the demand for energy increasing and the requirement for new oil and gas pipelines to transport hydrocarbons to market, the debate around pipeline technology, and in particular, pipeline leak detection has increased. further, the regulatory requirements for oil and gas pipelines can vary significantly from one country to another. some countries require leak detection software on every pipeline over a certain length. Others only in areas of "high consequence." still others have little or no formal requirements stated for a leak Detection system (IDs) to be installed on operating oil or gas pipelines. While even the best leak detection system cannot prevent a rupture, a well-tuned, operating and wellmonitored leak detection system can provide early warning for a potential rupture by identifying leaks in their earliest stages, allowing time for the system to be shut down and repaired and often preventing a catastrophic pipeline failure before it occurs.



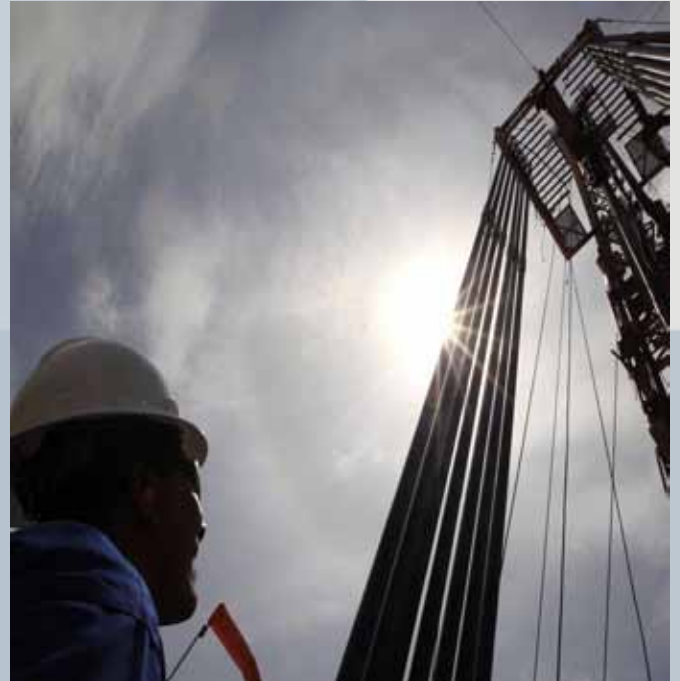
KHALEEJ ALFAW COMPANY
GENERAL CONTRACTING, TRANSPORTATION, PETROLEUM AND MARINE SERVICES LTD.
Mobile: +9647822266149
Address: Basra Al Jazaer Street, Alqumaa Group Building, Second Floor, Office No.03
P.O.Box: 2189
Email: info@khaleejalfaw.com



OIL PLANNING

strategic planning mechanisms for state Oil and national energy companies Evaluation of commodity purchase and analysis of associated risk. Management of financial risk with hedge fund mechanisms. Integrated risk management. ship/risk analysis / intelligence on market movements. Independent advisor to tendering committees. formation of international tenders. Contract negotiations between Governments and large public companies. Compensation trade as well as bilateral trade negotiations. Investigations of corruption and financial





More services



KHALEEJ ALFAW COMPANY
GENERAL CONTRACTING, TRANSPORTATION, PETROLEUM AND MARINE SERVICES LTD.
Mobile: +9647822266149
Address: Basra Al Jazaer Street, Alqumaa Group Building, Second Floor, Office No.03
P.O.Box: 2189
Email: info@khaleejalfaw.com

MORE OF OUR SERVICES

Earthwork This service includes excavation, backfilling, compaction, bound walls, and concrete work from reinforced concrete foundations to superstructure. Our activities also include major foundation works for the oil and gas industry as well as complicated works for buildings.

Steel Structure Works This service includes design, supplying of materials and execution of all structural members and welding works. The executed project included steel buildings, shelters, pipe racks, storage areas and plant rooms.

Finishing Works This includes all wet and dry finishing works such as block works, plastering, painting, partitioning and false ceilings.

Landscaping works This includes soft and hard landscaping work as well as infrastructure and road work activities such as major cut and fill trenches supply. We also do installation of all underground services of sewerages storm water and water.

Supply of electrical and telephone

works This includes installation of all materials, construction of manholes and inspection chambers as well as provision Generators and manufacture and install synchronize panel to operate more than four Generates in one time, included full protection and load share.

Electrical works The company is specialized in conducting wiring works for fire alarm system and telecom system, distribution boards and executing all electrical connections, street lighting works and installation of electrical equipment as well as maintenance of all generators and RO (Revers Osmoses) Stations.

Fabrication of House caravans In addition to the full scale construction works, it is also worth to mention that we had done subcontracting jobs to execute oil works that includes supply of caravan related to the location, installing cooling and lighting system. We have executed reformation and acidizing oil wells.



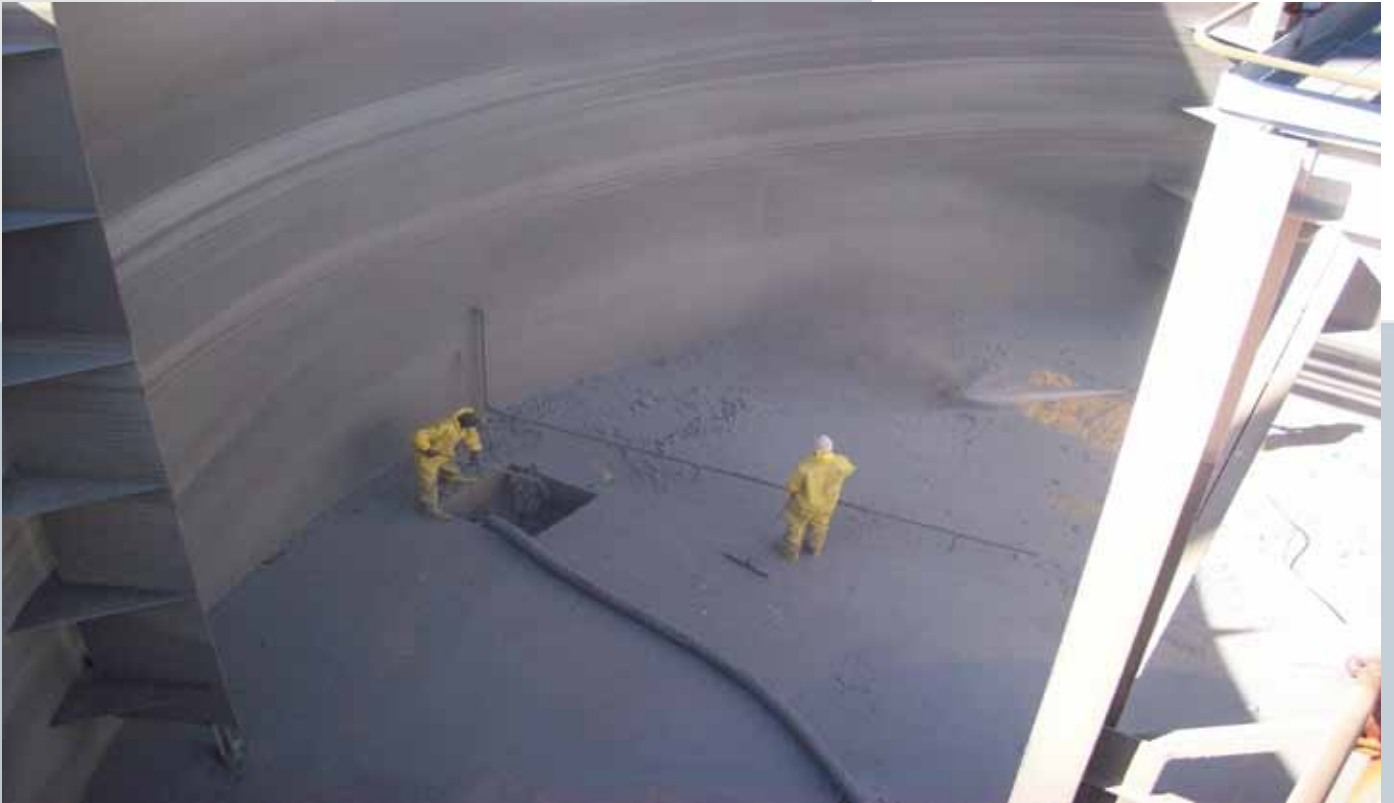
PIPELINE SERVICES

Our company is capable to do pipe line works in Water, Oil and Gas with qualified teams of engineers. The quality of the end product always meets the client requirements. The team consists of experienced Engineers, Supervisors, Welders, Quality Controllers, Fitters, Safety officers and all the required resources like cranes, excavators etc. During the construction the best practice will be adopted with the client approved materials.

We have sufficient number of welding machines, Ovens, all the measuring tools with duly calibrated. All the required NDT like RT, MPI, UT and DPI will be outsourced to third party independent lab to ensure that the end product meets the compliance as per the relevant international standards. Our company is having own fabrication workshops for our company with necessary lifting equipments and capable to produce all type of spools with various size of diameters



KHALEEJ ALFAW COMPANY
GENERAL CONTRACTING, TRANSPORTATION, PETROLEUM AND MARINE SERVICES LTD.
Mobile: +9647822266149
Address: Basra Al Jazaer Street, Alqumaa Group Building, Second Floor, Office No.03
P.O.Box: 2189
Email: info@khaleejalfaw.com



TANKS, VESSALS

Our company under takes all Structural steel fabricating & erection services for industrial equipment, machinery, duct-work, access work,

structural steel supports & custom building steel, tanks and vessals.

Full range of services includes design, fabrication, welding, assembly, non-destructive testing,

durable finishing, crating, shipping, installation, & mechanical contracting.

Specific capabilities include 2D & 3D drawing & detailing,

CNC plasma cutting, MIG, TIG & stick welding to AWS & ASME specifications, grit blasting, painting, assembling, non-destructive testing, skidding & trucking.

Field services include installation, erection, millwright services, piping, rigging, setting,

leveling, aligning, Equipment relocation, modification, machinery dismantling, repairing, parts replacement, re-assembling, & plant maintenance.



Our company have many vehicles and equipments use in our projects, our main logistic department coordinate all orders from other departments by sign order from managers of departments to give authority persons, there is other activity for this department, rent our vehicles for others .All vehicles and equipments have a certificate.



KHALEEJ ALFAW COMPANY
GENERAL CONTRACTING, TRANSPORTATION, PETROLEUM AND MARINE SERVICES LTD.
Mobile: +9647822266149
Address: Basra Al Jazaer Street, Alqumaa Group Building, Second Floor, Office No.03
P.O.Box: 2189
Email: info@khaleejalfaw.com



No.	Equipments	Qty.
1	Crane 160 ton	2
2	Crane 120 ton	3
3	Density film meter	3
4	Crane 80 ton	3
5	Crane 70 ton	4
6	Grading - Attachment	4
7	Crane 30 ton	8
8	Crane 25 ton	12
9	Hub Crane 15 ton	4
10	Hub Crane 10 ton	3
11	Hub Crane 8 ton	2
12	Hub Crane 5 ton	3
13	Shovel var.	5
14	Grader	4
15	Tanker (water) 36 mP3	10
16	Tanker (diesel) 36 mP3	15
17	Concrete factory	5
18	Loader 100 ton	4
19	Loader (Trailer)	30
20	Asphalt Compacter var.	10
21	Fork Lift 10 ton	7
22	Fork Lift 5 ton	9
23	Side Boom var.	4
24	Truck	6
25	Concrete pump	10
26	Truk Mixer	7
27	Excavator	12
28	Piles hammer	9
29	Man lift (basket)	12
30	Car waste containers	10
31	Tractor Cars	12

No.	Equipments	Qty.
32	Cars & pickup	40
33	Welding Machine Diesel	15
34	Generators var.	7
35	Clamps 6»- 40» Manual & hydraulic	12
36	Lining Machine (fiber glass)	9
37	Gaseous Fans	5
38	Camera x-ray	11
39	Vacuum test box	5
40	Ultrasonic device	9
41	Hardness tester	5
42	Thickness meter	3



MARINE SERVICES



We are one of the first companies in Iraq has worked in this job and We are able to issue all the cargo documents and we have specialization masters in this area with experience more than 10 years , The transferring liquid bulk from ship to ship is a highly technical and challenging operation that requires not only specialised skills and equipment, but also rapid mobilisation capability and in-depth experience in dealing with contingency situations. All operations are handled by trained and experienced personnel to ensure safe control.



Our company do:

Petroleum Survey Basrah Oil terminal BOT. (Basrah Oil Terminal, Khor al Zubair and Khor Al Aumyah , LPG Terminal - International Petroleum Surveyors).

Food Surveys including grain surveys.

Container condition and containerized cargo inspection (Dry , ISO tank and reefer).

General cargo inspection.

Quantity and quality inspection for edible oil products.

Loading/discharge supervision.

Tank Calibration Services.

Draught Surveys.

Hold inspection.

Condition survey

On/Off Hire Bunker Survey.

Hull & Machinery inspection , including CAP rating program for tankers.

Cargo gear inspection.

Towing Survey (Tugs & Barges).

Hot & Cold Work Permit.

Confined Space Entry Permit.

Compass Adjusting.

Pre purchase Survey



Shipping

SERVICES

Our Shipping Service

1. Owners' Protective Agency

We offers a scalable service to owners & operators ranging from provision of a simple independent report, to full involvement in expediting a port call, including the following:

Checking proforma D/A submitted by the head agent for compliance with applicable tariffs. Receipt of owners' funds and payment to head agents. Reporting the vessel/cargo status, as required. Checking cargo documents/SOF/ time sheets for correctness, notifying owner if not, and issuing letters of protest. Signing Bills of Lading.

2. Shipping Agency

We provide round the clock - 365 days a year - Launch Service to vessels Off-shore and Fresh Water Supply by Barge. Crew changes, Delivery of Ship Spares and CTM, will be effected on time. Co-ordination of Supplies Delivery, De-sloping, Bunkering, Fresh Water Supply, boarding and/or disembarking of Surveyors and Technicians, is done with accuracy and utmost care.

3. Cargo Tally

The objective of this service is to provide assurance that the number or quantity of goods to be shipped or received is the same as described in shipping documents such as bill of lading, Mates receipt, letter of credit or other documents. Buyers and / or sellers are offered the opportunity to order a tally or count of the goods or material at the time of loading/unloading to obtain confidence that the quantity of goods loaded/unloaded are the same as the number purchased, i.e., described on the purchase order's product description, product specification and features.

4. Steel and Pipe Pre-loading /discharging and out turn services

We specialise in steel products pre-shipment inspections, discharge survey and expert intervention connected with all technical aspects relating to the carriage of steel products by sea. Post shipment damage claims joint surveys are conducted on behalf of the shipping lines, shippers and consignee to verify the damage to the steel cargoes.


5. Discharge Supervision.



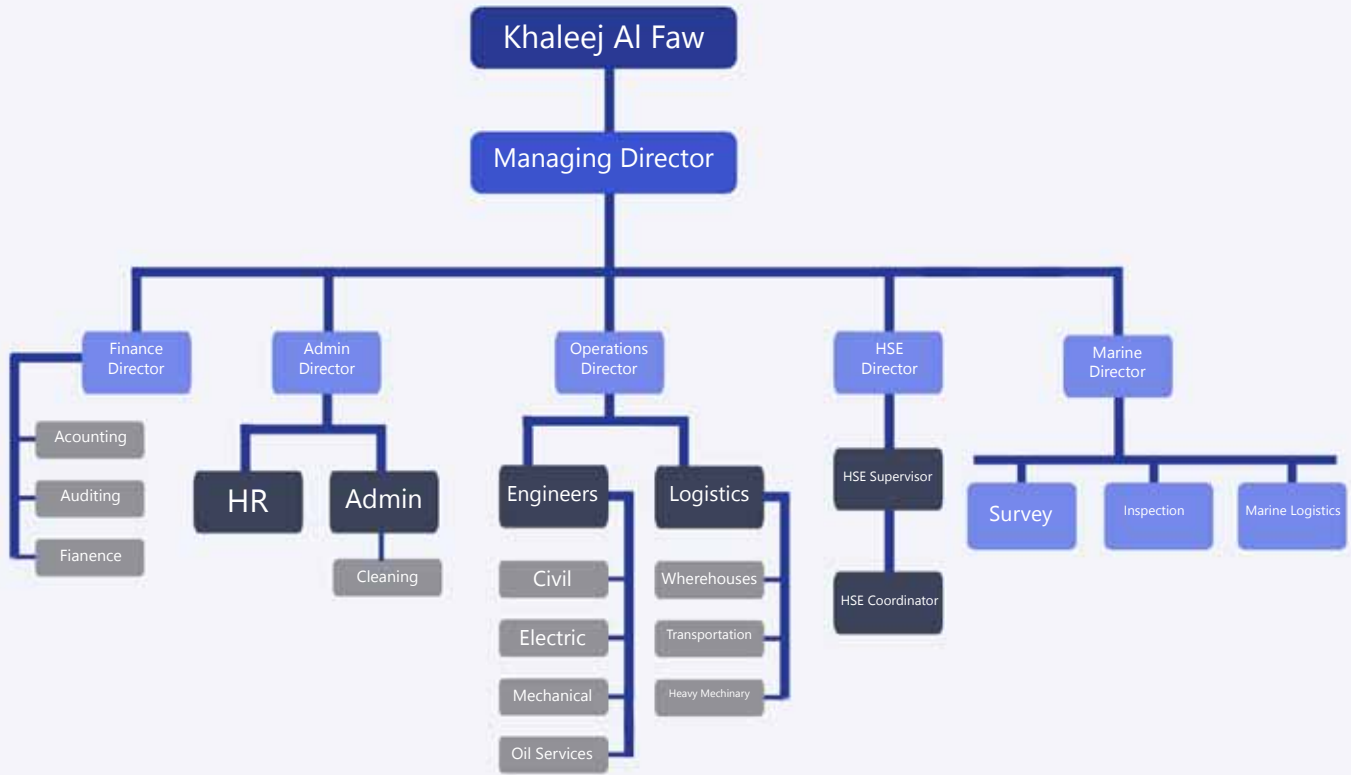
Safety and HSE



KHALEEJ ALFAW COMPANY
GENERAL CONTRACTING, TRANSPORTATION, PETROLEUM AND MARINE SERVICES LTD.
Mobile: +9647822266149
Address: Basra Al Jazaer Street, Alqumaa Group Building, Second Floor, Office No.03
P.O.Box: 2189
Email: info@khaleejalfaw.com



The safety of all staff and employees is a top priority in our company departments. Everyone is responsible, at all times, for striving to exceed the minimum legal safety standards set forth by the Workers Compensation Act, and other regulatory bodies to reduce the risk involved with working in our facilities. The Departments of our company has an HSE Committee made up of management, staff, and graduate workers that meets monthly to discuss issues of Health, Safety and Environmental impact that affect the Department, and to review any safety incidents that have occurred. The minutes of each meeting are available for all to review, and can be found on the HSE bulletin boards in the each Department. The Department provides an HSE orientation for all management members, staff and workers. Our HSE provides total solution to real world problems in the sphere of fire protection, safety and environment protection and undertakes contracts on total turnkey responsibility right from identifying the problem, in depth analysis, and recommending the right and reliable solution integrating world's best technology.



Our organization chart



KHALEEJ ALFAW COMPANY
 GENERAL CONTRACTING, TRANSPORTATION, PETROLEUM AND MARINE SERVICES LTD.
 Mobile: +9647822266149
 Address: Basra Al Jazaer Street, Alqumaa Group Building, Second Floor, Office No.03
 P.O.Box: 2189
 Email: info@khaleejalfaw.com

Our Quality



We are passionate about excellence and doing our work right the first time. Our reputation depends on our delivered value in the eyes of every customer and community. Our company is a pioneering engineering company providing high-quality engineering consultancy services to its clients. We are committed to a policy of quality assurance complying with ISO-9001 and ensure that this policy is understood, implemented, and maintained throughout the company. Originally approved in 2014, our scope of certification includes engineering and technical consultancies comprising project management, engineering/design services, procurement, construction management/ supervision for architectural, civil, structural, electrical/power, mechanical, water and wastewater, industrial, and petroleum.